

iSbote L6 3D Face Recognition Smart Lock With TUYA APP & Fingerprint*Smart Automatic 3D Face ID Locks featuring Wireless, Fingerprint, Camera, Code, Tuya APP*

With powerful smart technology and hardware design, the L6 Face Recognition Full-Automatic Smart Lock from iSbote can help users fast and touchlessly unlock in 0.5 second. Featuring its unique fingerprint identification knowhow, iSbote L6 can fit for dry, wet and incomplete fingerprints, so can be widely applied into diverse situations.

The L6 works for users intelligently and safely. When the doorbell rings, the built-in camera can automatically record video and take photos. When users receive mobile phone request to unlock, they can remote unlock in the APP. If users are at home, the display screen will show who is coming when doorbell rings. It also sends out Anti Prying Alarm to owner's mobile phone in real time if the smart lock is abnormal. In unlocking status, the L6 will automatically lock the door, so users do not have to manually lock.

Key Features

- Powerful smart technology and hardware design, fast and touchlessly unlock in 0.5 second
- Built-in camera can automatically record video and take photos to transfer remote
- Left side Open and Right side Open are supported
- Built-in Rechargeable lithium battery, Low battery warning
- Emergency power supply in case of lost power
- When the smart lock is abnormal, it sends alerts to the mobile phone in real time
- Digital door viewing as well as night vision function
- Automatic Camera: When the Doorbell rings, the picture will appear on the screen and start to record voice, and you can unlock in the APP

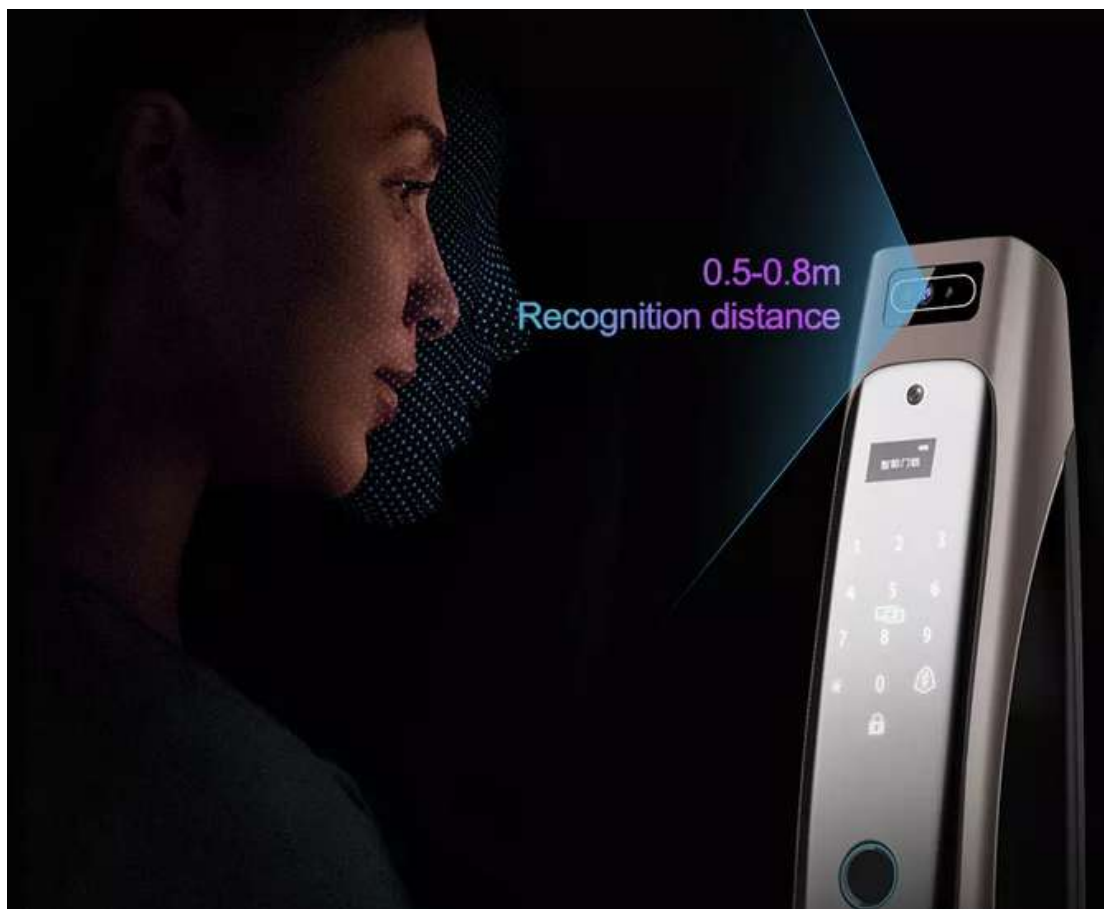
Key Benefits

- Unique fingerprint identification knowhow, fit for dry, wet and incomplete fingerprints
- Remote unlock or lock in the mainstream Tuya APP for best locking control in all 24/7
- Automatically lock the door and make users enjoy unmatched security feeling
- 7 Unlock ways: Face Recognition, Tuya App, Fingerprint, Passcode, Card, Key
- Locking & Unlocking automatically with the newest automatic technology
- Indoor double-lock knob provide you with one more safeguard
- Query unlock records in the lock APP database
- Fit to different door types: Wooden, stainless steel, bronze, Double and more
- It has USB emergency interface, can charge the battery when it runs out

Core Specifications

Brand Name:	iSbote, Model Number: L6
Door Type:	Wood door, Steel door, Stainless Steel door, Aluminum door, Brass door for house/office/apartment use
Material:	Aluminum alloy
Available color:	Black
Communication:	Tuya App, Wi-Fi
Unlock way:	Mobile APP +Face + Fingerprint + Password + Card + Key + Remote (Optional)
Tuya APP:	support IOS and Android phone
Power supply:	3200-4300 mAh Lithium Battery, USB charging port for emergency

Dimension:	About 415*80*70mm
Fingerprint sensor:	Capacitive sensor
Mechanical key:	Support
Data Storage Options	Cloud or memory card
Suitable Door Thickness	Reference: 42~130MM
Lock body	Reference for details
Key Cylinder Grade	Class C
Recognition Speed:	1.5s
Recognition error	≤0.0001%
Emergency power supply	UBS Port (can be connected to power bank for power supply)
Power supply	4.8v send low power alert, standby power: 35 μA; Working power: less than 200 mA
Working temperature	-20°C~60°C
Working humidity	20%~90%
Fingerprint type	semiconductor fingerprint sensor
Compatible OS	Android 4.3/IOS7.0 or above



3D FACE RECOGNITION

MOBILE-GRADE CAT'S EYE CAMERA

Automatic switch lock
Remote cat eye video



CORE TECHNOLOGY



Camera



3D face recognition



doorbell snapshot



artificial intelligence



fingerprint



security alarm



Mobile APP



Automatic switch lock



Class C lock cylinder

INDOOR DISPLAY

Ring the doorbell to confirm the visitor
Elderly and children use



HD WIDE-ANGLE LENS

Wide-angle lens,
The dark environment is also fresh and visible



FINGERPRINT 4.0 TECHNOLOGY

Swedish FPC semiconductor fingerprint sensor
Effectively prevent fake fingerprints



AUTOMATIC LOCK

The lock tongue retracts automatically after fingerprint verification,
saving one step when opening the door

Automatic locking after closing the door, more secure



one touch
automatic unlock

Fingerprint Verification Latch
automatic retraction




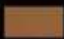

close the door
automatic locking

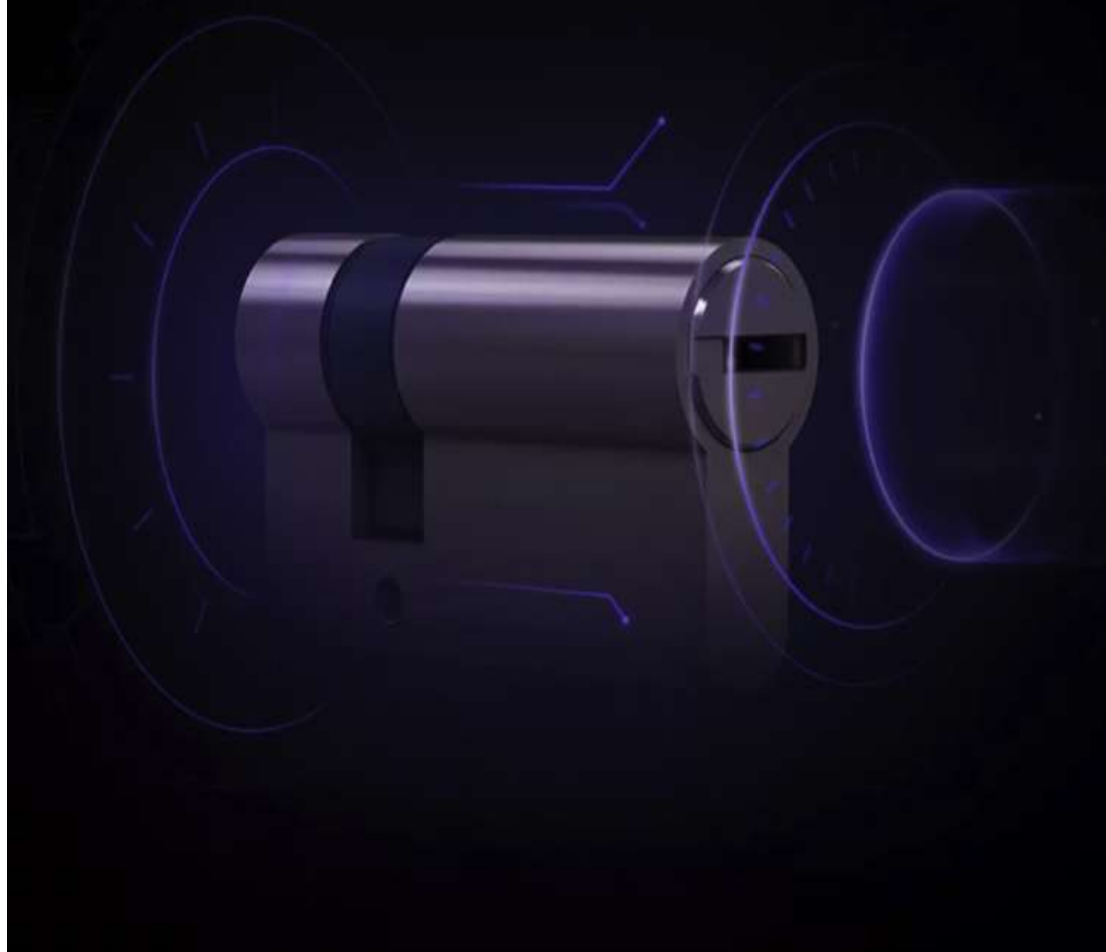
After closing,
Press the lock button
automatic lock



IN-LINE C-CLASS LOCK CYLINDER

Technical unlocking difficulty

- Class A  easy
- Class B  Disaster
- Class C  very difficult



MOBILE PHONE REMOTE

Ring the doorbell to send a request to unlock the reminder
Remote video unlocking or sending a temporary password to unlock

Hello, at your door

wait, send you
temporary password

*The display screen is subject to the actual

3D FACE RECOGNITION UNLOCK

Equipped with human body sensor module,
close to the door lock within 0.5-0.8 meters distance
face recognition on



ABNORMAL DOOR LOCK REMIND

When the door lock is picked, it will sound the alarm sound in time
The mobile phone can also see abnormal reminders



PRODUCT PARAMETERS



ANTI-JAMMING SYSTEM

Resistant to small black box coil interference
The circuit board is treated with high-density coating,
which is moisture-proof and dust-proof

